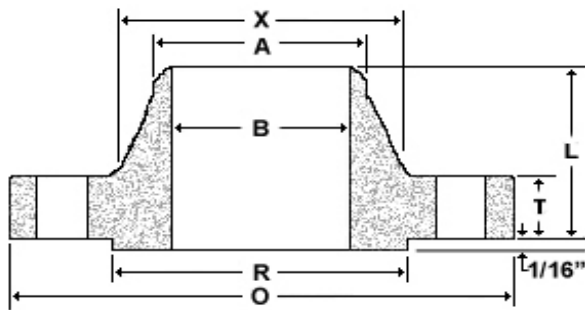
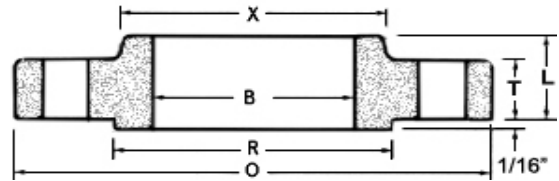


Industry Standard Class 350



Weld Neck



Slip-On

Nom Size	Thickness				OD of RF R	Dia at Base X	Bore		LTH		Dia Bevel A
	OD	Weld Neck	Slip-On	Blind			Weld Neck	Slip-On	Weld Neck	Slip-On	
	O	T	T				B	B	L	L	
26	32.75	2.50	2.50	2.75	29.50	27.88	To be specified by purchaser.	26.25	5.00	4.50	To be established by design requirements.
28	34.75	2.50	2.50	2.88	31.50	29.88		28.25	5.00	4.50	
30	37.00	2.63	2.63	3.00	33.75	32.13		30.25	5.25	4.75	
32	39.00	2.75	2.75	3.25	35.75	34.13		32.25	5.50	5.00	
34	41.00	2.88	2.88	3.38	37.75	36.13		34.25	5.75	5.13	
36	43.75	3.13	3.13	3.63	40.25	38.50		36.25	6.13	5.63	
38	45.75	3.13	3.13	3.75	42.25	40.50		38.25	6.13	5.63	
40	47.75	3.25	3.25	4.00	44.25	42.50		40.25	6.25	5.88	
42	50.00	3.50	3.50	4.13	46.50	44.75		42.25	6.50	6.13	
44	52.75	3.75	3.75	4.38	48.88	46.75		44.25	6.75	6.75	
46	54.75	4.25	4.25	4.75	50.88	48.75		46.25	7.25	7.25	
48	56.75	4.25	4.25	4.75	52.88	50.75		48.25	7.25	7.25	
52	61.50	4.25	-	-	57.25	55.00		52.25	7.50	-	
54	63.50	4.50	4.75	-	59.25	57.00		54.25	7.75	8.25	
60	69.50	4.50	5.00	-	65.25	63.00		60.25	8.00	8.50	
66	77.00	4.00	-	-	72.38	70.00		66.25	8.50	-	
72	83.00	4.00	-	-	78.38	76.00	72.25	9.00	-		

Dimensions are in inches. Weights are in pounds.

continued on next page

Industry Standard Class 350

continued

Nom Size	Drilling				Weight		
	Bolt Circle	Bolt Length ^a	Hole Dia ^b	# of Holes	Weld Neck	Slip On	Blind
26	30.63	8.00	1.13	28	245	225	580
28	32.63	8.25	1.13	28	260	250	750
30	34.88	8.50	1.13	32	305	295	890
32	36.88	8.75	1.13	36	340	325	1050
34	38.88	9.00	1.13	40	375	355	1225
36	41.50	9.75	1.25	40	480	465	1500
38	43.50	10.00	1.25	40	510	490	1700
40	45.50	10.25	1.25	44	540	530	1975
42	47.75	10.75	1.25	48	640	620	2225
44	50.25	11.50	1.38	44	760	760	2625
46	52.25	12.25	1.38	48	880	880	2950
48	54.25	12.25	1.38	48	920	920	3300
52	58.75	-	1.50	52	1075	-	-
54	60.75	-	1.50	52	1200	1150	-
60	66.75	-	1.50	60	1325	1450	-
66	74.00	-	1.63	60	1675	-	-
72	80.00	-	1.63	72	1850	-	-

Dimensions are in inches. Weights are in pounds.

flanges, and nominal OD of pipe or shell used with Slip-On flanges.

Larger sizes as well as intermediate sizes can be furnished.

*Bolt Length figured on Slip-On/Blind bolting combination. Other combinations may

(a) Bolt lengths are calculated based on bolting one slip-on to one blind.

Any other bolting combination will cause variance in bolt length.

(b) Bolt hole diameter 1/8in. larger than bolt diameter.